

PHILIP WAS SNATCHED AWAY ... AND SO WERE WE

When they came out of the water, the Spirit of the Lord snatched Philip away ... But Philip found himself at Azotus ... Acts 8: 39, 40

On December 2, we traveled by car from the east coast of Florida to Orlando and on to the Ocala area, traveling along I-95 to Beach Line (Hwy. 528), Hwy. 417, Hwy. 408, the Florida Turnpike, and an off ramp to the Ocala area. I could have traveled from 528 directly to the Turnpike, but find the other way is less traffic and safer.

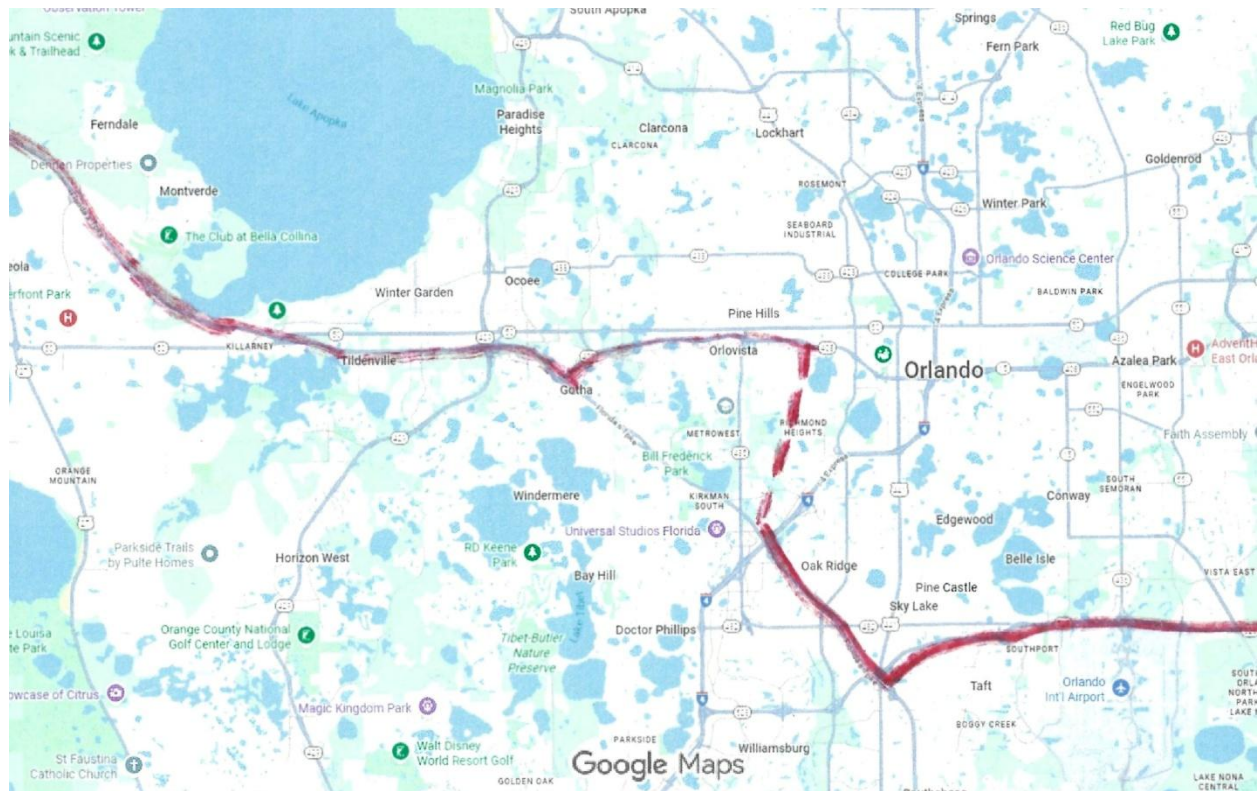
Late in the afternoon of December 2, as we returned home, it began to turn dark. I exited off the Turnpike to 408 and traveled for some miles until I reached the point that I should begin to see the lights of down town Orlando. All of a sudden, I went under an 8-lane overpass, (which does not exist on 408), and found myself, 4+ miles further south of the city, viewing the tourist area of International Drive/ Universal Studios and driving on the Turnpike. I commented to my wife what we were seeing, and then as I passed the new off-ramp from I-4, I began to question what was happening. I looked to the side of the road and saw the Turnpike sign, and realized I needed to start looking for exit 254 which would take me to the Beach Line. On the 408 I had been traveling in the next to right lane, and that continued on the Turnpike. As I passed the airport exit on the Beach Line, I continued to question what had happened, and why God did not want me to pass through the down town of Orlando that evening.

The next day, I search the internet for news of downtown Orlando, and found nothing of note. I downloaded the SunPass transactions and found the time stamps to show that I averaged 63 mph on the Turnpike. I went back to examine the aerial view of the 408 intersection and confirmed that if you are in the two right lanes, you can only go on to the 408, you cannot get back on the Turnpike. I also know that I did not pass the Turkey Lake Service Plaza. The only way to get from the 408 to the Turnpike via a limited access highway, would have been to turn on I-4. But that was downtown and the time taken for that route would have recorded a much later SunPass time stamp.

How do you interpret this? Whenever we get in the car, we pray for God's protection. But there was hardly any traffic on the 408. It was all on the Turnpike! So there must have been some spiritual warfare in the unseen world related to our ministry.

In the last 3 months we have had over twice the traffic, most of it from China and the Far East. Is this related?

See page 2 for a map with the "snatching away" path.



The dotted line indicates the “snatching away” part of the trip.